

Advanced Renal Cell Carcinoma

A DIFFICULT-TO-TREAT TYPE OF KIDNEY CANCER

What is renal cell carcinoma (RCC)?

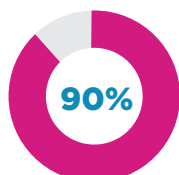


Renal cell carcinoma is the most common type of kidney cancer.¹

RCC is a type of kidney cancer that develops in the lining of the renal tubules, which filter the blood and produce urine. Although RCC usually grows as a single tumor within a kidney, there may also be two or more tumors in one or both kidneys. There are various types of RCC, the most common of which include clear cell, papillary and chromophobe.^{1,2}

KIDNEY CANCER WILL IMPACT
APPROXIMATELY
73,750
NEW PATIENTS
IN THE UNITED STATES IN 2020³

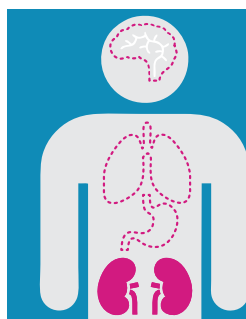
RCC REPRESENTS



OF ALL KIDNEY
CANCERS¹

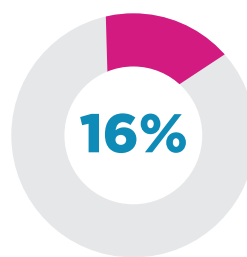
Some patients with RCC will have or develop advanced disease

Both unresectable and metastatic RCC are considered advanced RCC.



Tumors in the kidney that cannot be surgically removed are unresectable.

Disease that spreads beyond the kidney is called metastatic renal cell carcinoma.⁴



WILL HAVE
METASTATIC
DISEASE AT
DIAGNOSIS³



WILL DEVELOP
METASTASES AFTER
INITIAL SURGICAL
TREATMENT FOR
LOCALIZED RCC⁵

The prognosis for patients with advanced RCC is poor, with a 5-year survival rate ranging from 5% to 13%.^{3,6}

Early kidney cancers do not usually cause any signs or symptoms, but as the tumor grows, **some possible signs and symptoms** of kidney cancer include:¹



BLOOD IN THE URINE



A MASS ON THE SIDE OR LOWER BACK



FATIGUE



LOSS OF APPETITE



LOW BACK PAIN ON ONE SIDE NOT CAUSED BY INJURY



WEIGHT LOSS NOT CAUSED BY DIETING

MORE THAN 50%



Because kidney cancers often remain asymptomatic until the late stages of the disease, **more than 50% of people with RCC learn of the cancer incidentally during imaging tests for other abdominal diseases.⁷**

The following **may increase the risk** of developing kidney cancer:⁷



GENDER

Males are more likely to be diagnosed than females



FAMILY HISTORY

Having a first-degree relative (parent, brother, sister, child) with kidney cancer



AGE

While kidney cancer can occur at any age, most cases are diagnosed in people between 60 and 70 years old



LIFESTYLE FACTORS

Smoking, obesity, and hypertension

References:

1. About Kidney Cancer. American Cancer Society. Atlanta, GA. 2020. Available at <https://www.cancer.org/cancer/kidney-cancer/about.html>.
2. Renal Cell Cancer Treatment. National Cancer Institute. Bethesda, MD. 2020. Available at <https://www.cancer.gov/types/kidney/hp/kidney-treatment-pdq>.
3. Cancer Stat Facts: Kidney and Renal Pelvis Cancer. National Cancer Institute. Bethesda, MD. 2020. Available at <https://seer.cancer.gov/statfacts/html/kidrp.html>.
4. NCI Dictionary of Cancer Terms. National Cancer Institute. Bethesda, MD. 2020. Available at <https://www.cancer.gov/publications/dictionaries/cancer-terms>.
5. Kim D et al. Role of Metastectomy for Metastatic Renal Cell Carcinoma in the Era of Targeted Therapy. World Journal of Urology. 2014; 32: 631-642.
6. Gupta K et al. Epidemiologic and socioeconomic burden of metastatic renal cell carcinoma (mRCC): A literature review. Cancer Treatment Reviews. 2008; 34: 193-205.
7. Ljungberg B et al. Guidelines on Renal Cell Carcinoma. European Association of Urology. 2015. 1; 1-58.

